

# **Urban-Rural Linkages Webinar Series**

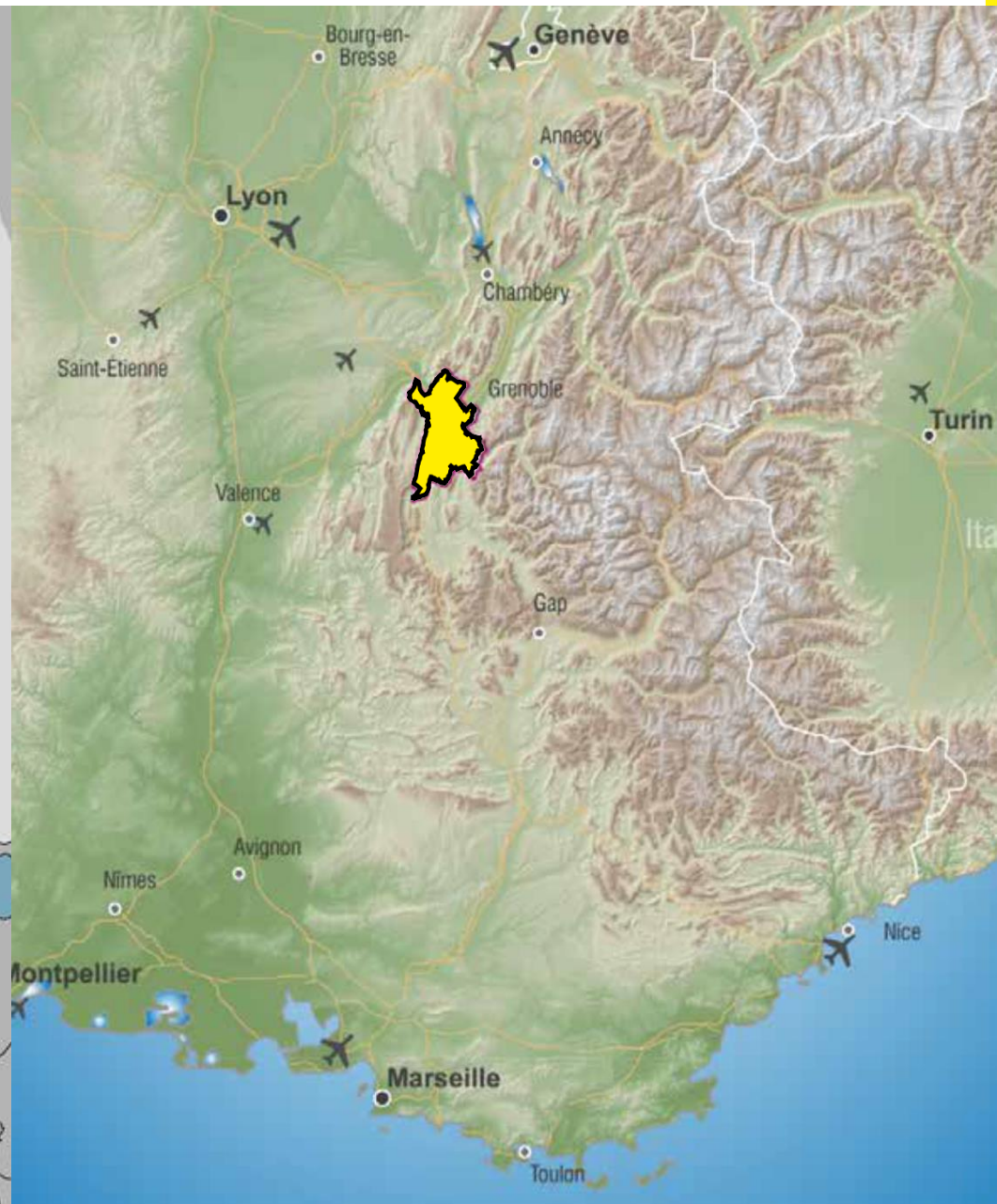
## ***Urban-rural linkages in the time of Covid-19: Metropolitan Perspectives***

***The case of Grenoble - Alpes Métropole (France)***



**GRENOBLEALPES  
MÉTROPOLE**

# ***Grenoble - Alpes Métropole location***



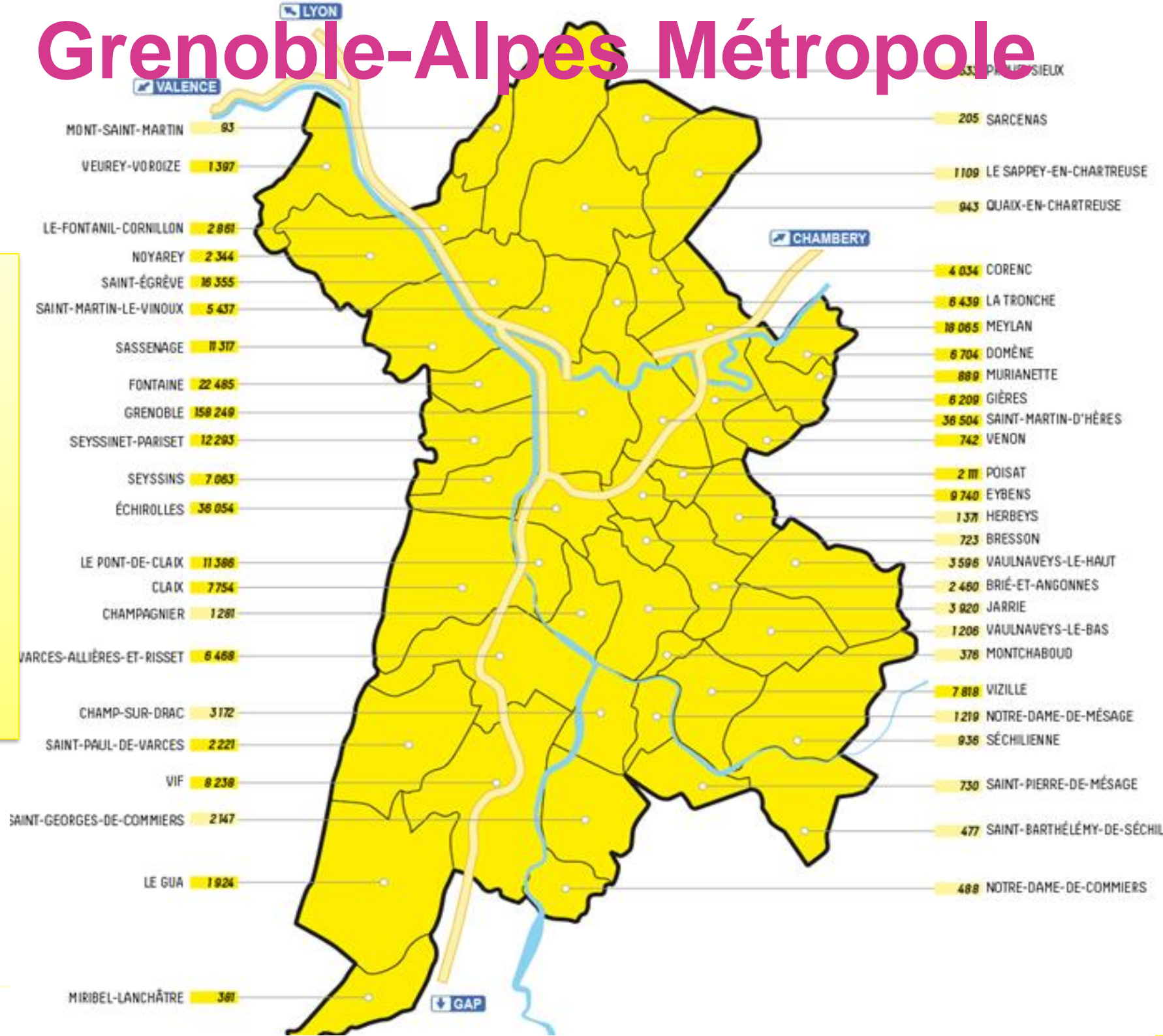
# Urban-rural linkages in the time of Covid-19





**GRENOBLEALPES  
MÉTROPOLE**

# Grenoble-Alpes Métropole



## Attributions

Economic Development;  
Water & sanitation;  
Waste management;  
Housing,  
Transportation;  
Energy; Urban development;  
Environment, Social cohesion, Digital solution

# Measures taken vs Covid-19

---

## → National :

- General **lock down** (17<sup>th</sup> march – 11<sup>th</sup> may)
- Social & economic **shutdown** for all collective activities (schools, restaurants, events...)
- Closing of EU/Schengen **borders**
- Requisition of all **masks** exclusively reserved for medical use
- Promotion of **social distancing**
- **Economic support** : liquidity facilities, full financing of partial unemployment, delaying payment of social security charges & taxes + national solidarity fund for SMEs (restaurants, transportation, cultural sector, tourism & events) with the contribution of the regional and metropolitan levels

## → Regional : suspension of payments & rents, 0% loans, contribution to the NSF

## → Local :

- Tourist - and road- taxes and rents for shops suspended
- Support for cancelled events maintained, liquidity facilities.
- More interesting for rural areas : on-demand transport service in rural areas, continuation of food markets by derogation (38 in 18 municipalities), platform facilitating vouchers in local shops locked down, platform connecting local producers and supermarkets.

## ***GAM partners vs Covid-19***

---

- State, Region, Department, Municipalities
- University hospital
- Chamber of commerce & Chamber of Agriculture
- Professionals (tourism, food, culture, events, ..)
  
- **Crisis platform** with local partners to **follow up the economic** impacts of the Covid-19:
  - this *might* have strengthened the relations with the *stakeholders*.
  - Multilevel governance (political issue) : return to business as usual ?

# Impact of the Covid-19 crisis

---

## General slowdown & even a shutdown of activities in specific sectors:

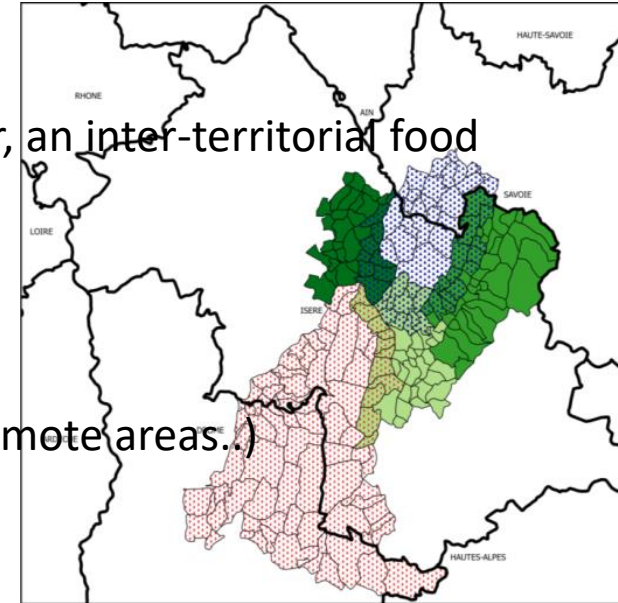
- Tourism
  - Sport, Culture & events
- 
- Food markets restricted
  - Delivery & drive increased
- 
- Public works sector remains dynamic
  - Industry less affected than elsewhere



# ***GAM previous policies linked w/ rural***

➤ ***Better prepared ? Previous multilevel governance & partnerships in various sectors :***

- ➔ **Food policy** (integrated approach w/ local partners : agro-food cluster, an inter-territorial food policy)
- ➔ **Tourism** (territorial approach & partnership w/ professionals)
- ➔ **Transportation**
  - territorial approach (urban delivery hub, service on demand in remote areas..)
  - users & municipalities)
- ➔ **Digitalisation**
  - Department : broadband coverage
  - Métropole : facilitator w/ municipalities, private sector & citizen



➤ ***Acceleration of changes toward local, green economy with digital support, an opportunity for rural areas ?***





# Post-crisis recovery phase

- *Toward strengthened multilevel governance for a greener and more local economy ?*



## Discussions about:

- conference on the revitalisation of mountain **tourism** in June/July
- plan to support productive investments fostering local and **green** production and consumption
- plan to support innovations fostering the **relocation** of activities

# Urban-Rural Linkages Webinar Series

*Thank You !*

*Gabriel Voisin-Fradin  
Grenoble - Alpes Métropole (France)*