



ARCO VERDE

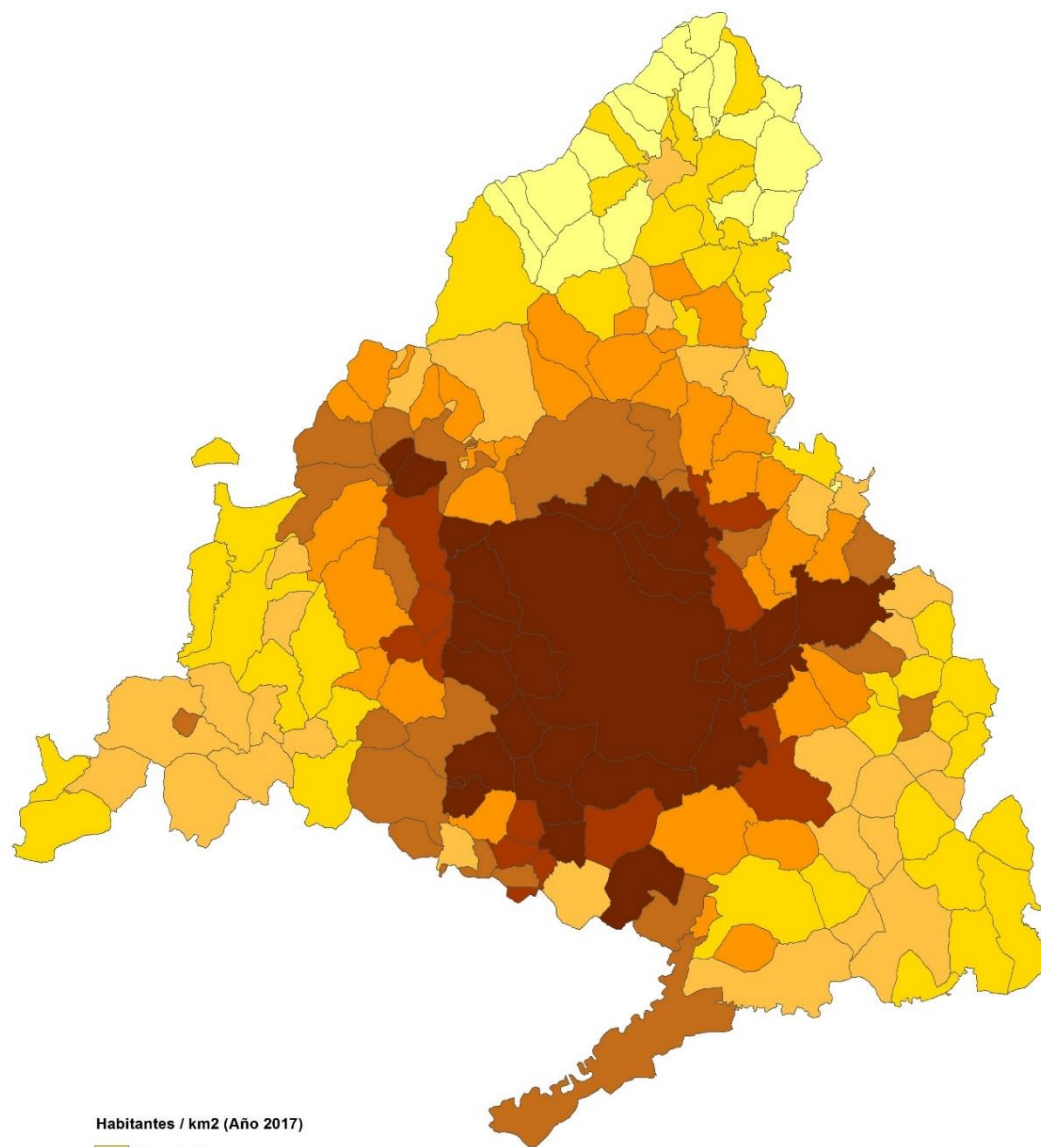
Comunidad de Madrid



Comunidad
de Madrid

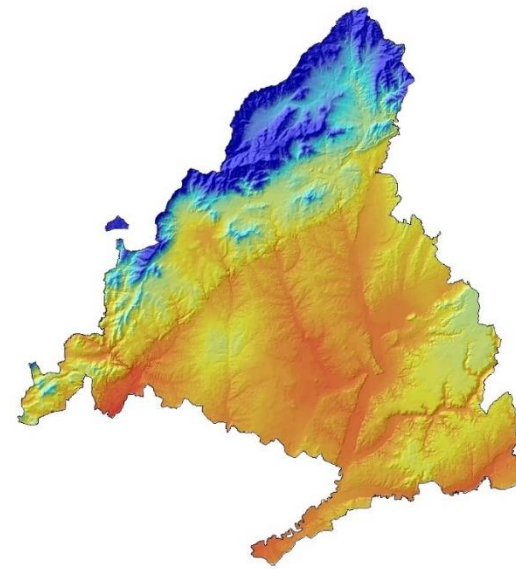
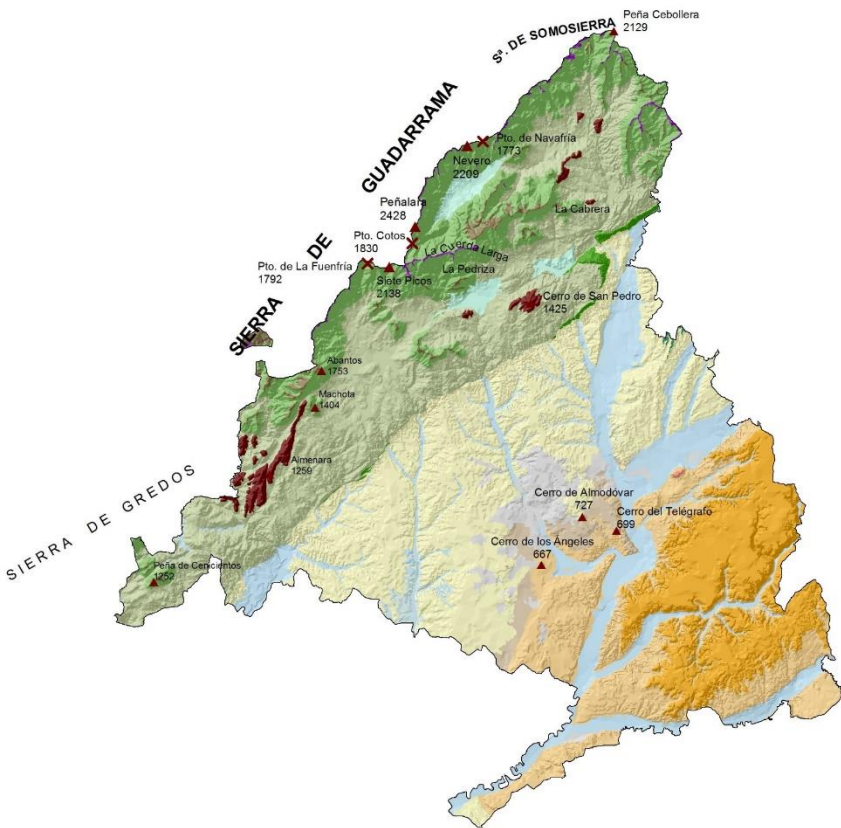
Dirección General de
Biodiversidad y Recursos Naturales
Consejería de Medio Ambiente,
Ordenación del Territorio y Sostenibilidad

1. Comunidad de Madrid.

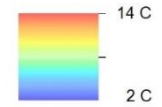


Habitantes / km2 (Año 2017)

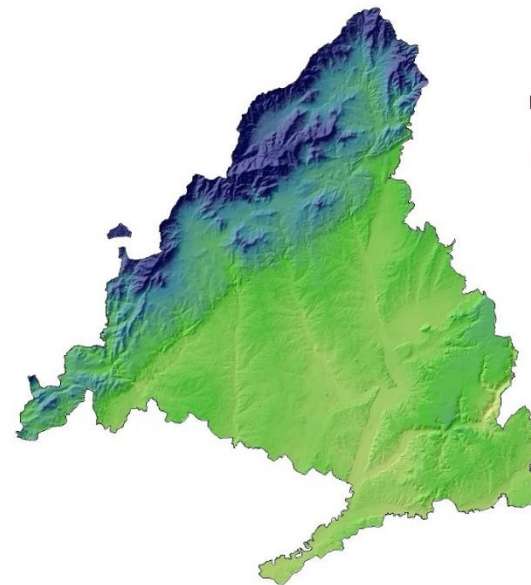




Temperatura media anual

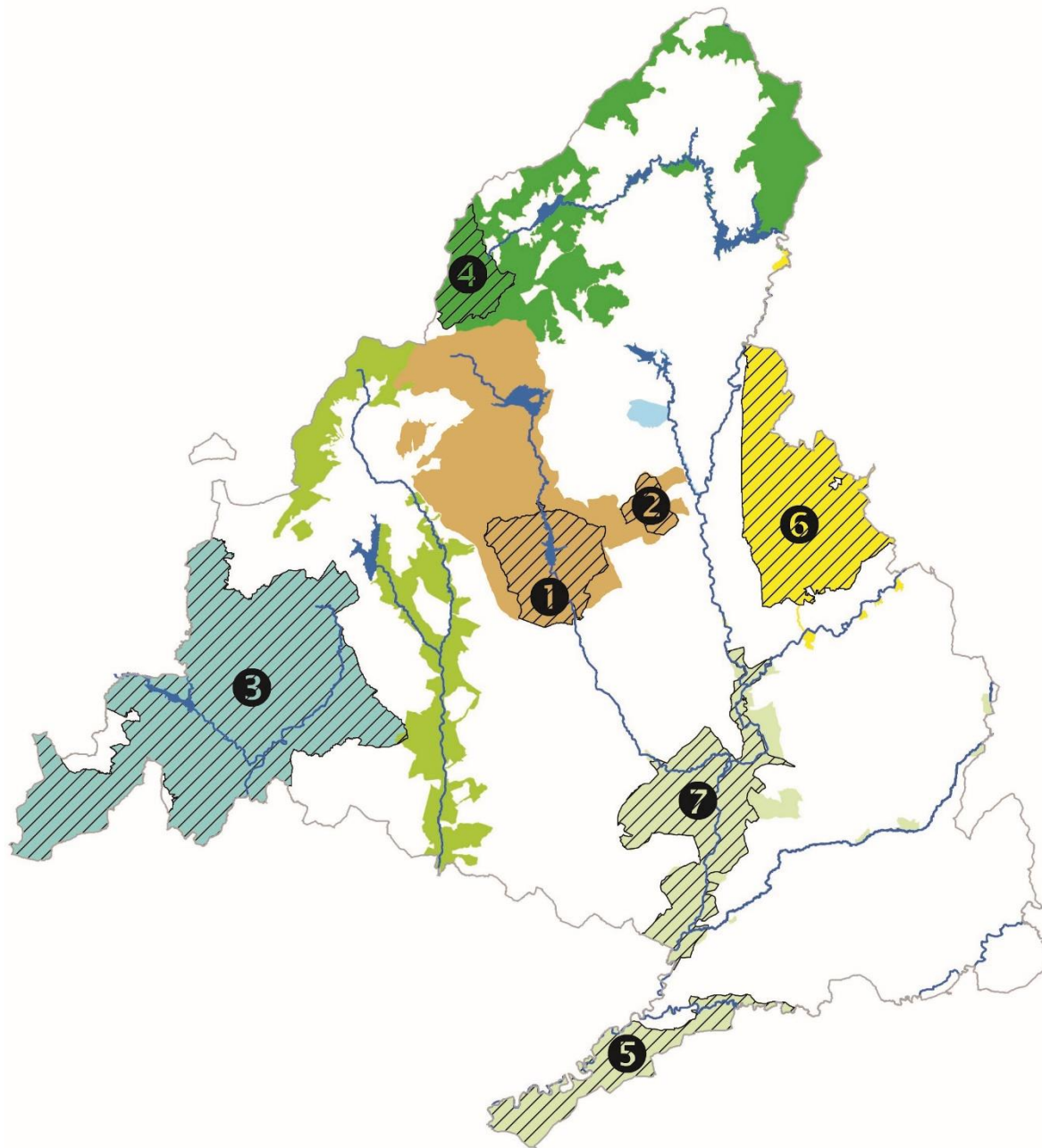


- LA SIERRA**
- Cimas**
- CIMAS Y CUMBRES SERRANAS (DIVISORIAS PRINCIPALES)
 - PARAMERAS SERRANAS (DIVISORIAS SECUNDARIAS)
 - CERROS AISLADOS O ALINEACIONES DE CERROS (RELIEVES RESIDUALES)
- Vertientes**
- LADERAS DE LA SIERRA
 - RAMPAS
- Depresiones**
- VALLES INTERIORES
- LA DEPRESIÓN**
- Altas superficies**
- PÁRAMOS Y ALCARRIAS
 - CAMPÍNAS DE SUSTITUCIÓN DEL PÁRAMO
 - RAÑA
- Relieves intermedios**
- CERRO TESTIGO
 - RELIEVES DE TRANSICIÓN EN LA CUENCA
 - QUESTAS CALCÁREAS
- Valles**
- LLANURAS ALUVIALES Y TERRAZAS
 - VERTIENTES
 - URBANO



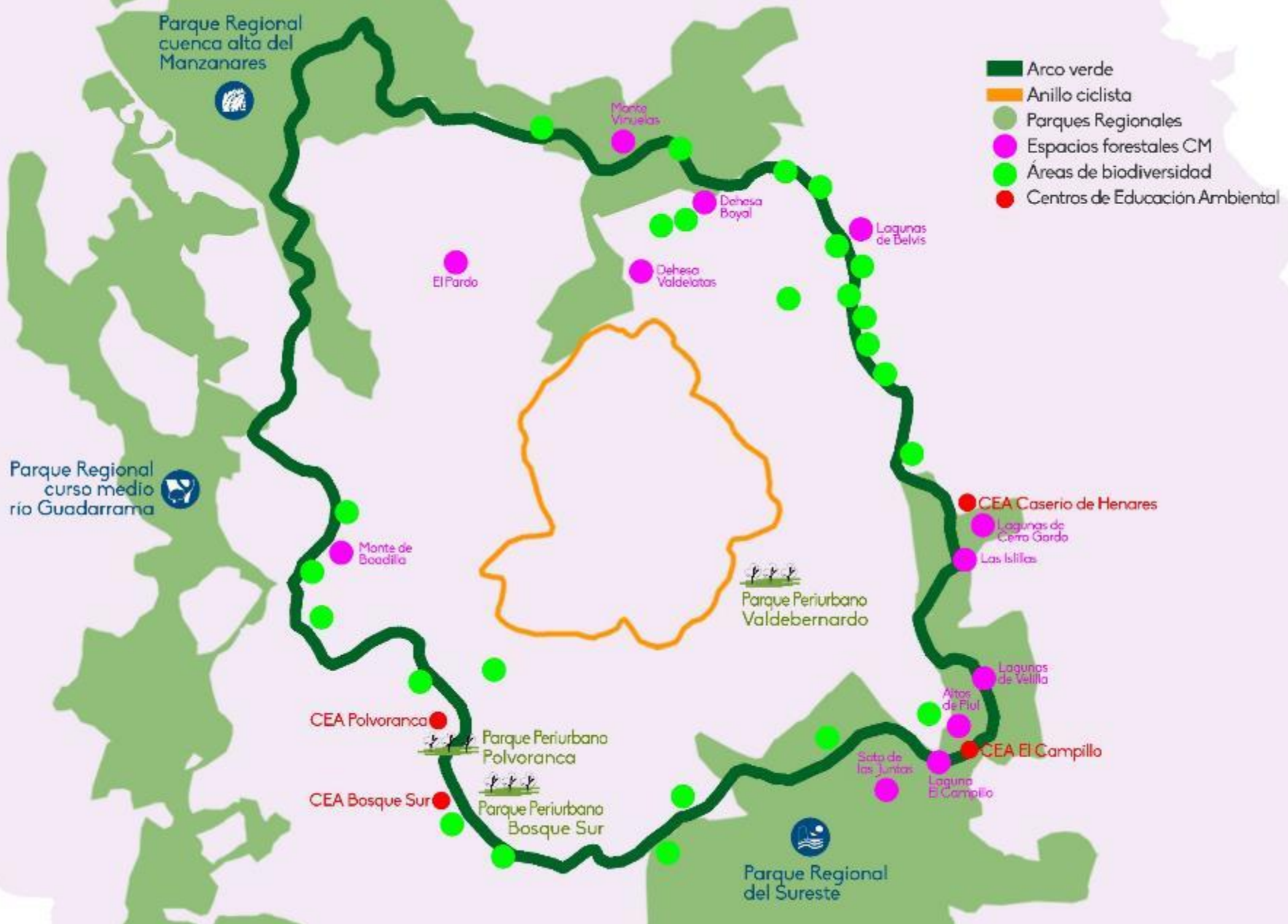
Precipitación anual





- 1 ZEPA Monte de El Pardo
- 2 ZEPA Soto de Viñuelas
- 3 ZEPA Encinares de los ríos Alberche y Cofio
- 4 ZEPA Alto Lozoya
- 5 ZEPA Carrizales y sotos de Aranjuez
- 6 ZEPA Estepas cerealistas de los ríos Jarama y Henares
- 7 ZEPA Cortados y cantiles de los ríos Jarama y Manzanares

- ZEC Cuenca del río Guadalix
- ZEC Cuenca del río Guadarrama
- ZEC Cuenca del río Lozoya y Sierra Norte
- ZEC Cuenca del río Manzanares
- ZEC Vegas, cuevas y páramos del sureste de Madrid
- ZEC Cuencas de los ríos Alberche y Cofio
- ZEC Cuencas de los ríos Jarama y Henares



2.

Integral Project

- Green Infrastructure
- Biodiversity
- Mobility
- Climate adaptation
- Invasive
- Forest
- Social participation

Conectivity

Bike lanes:
Anillo Verde Ciclista Madrid
Carril Bici Madrid-Soto del Real
Carril Bici Madrid-S.M.Vega



24 Public Transport Stations Train, Metro Sur, Metro Ligerio, Metro



Biodiversity

30 Forest Areas
25 new Biodiversity Áreas de Biodiversidad y
8 river sections



Investments to protect birds, pollinators, reptiles, amphibians, butterflies...



Invasive species



Mobility

Pavement improvement



Resting areas



2.

Integral Project

- Green Infrastructure
- Biodiversity
- Mobility
- Climate adaptation
- Invasive
- Forest
- Social participation

Forest works

Planting of 540,000 trees and shrubs



Plantation irrigation and support for 3 years in periods of need.



Tree replacements



Social Participation

Environmental Education



9 Cultural Heritage Zones



3.

Phases
of the
Project

PHASE I Actions on land owned by the
Community of Madrid

PHASE II Actions on local ways.

PHASE III Incorporation to the Project of
large peri-urban areas under study

4.1.

Phase I

Actions on land owned by the Community of Madrid

- **Vías Pecuarias:** 1st priority
- Public Utility Woodlands
- Peri-urban Parks
- Paths owned by Canal Isabel II and Dirección General de Carreteras (bike lines).
- Others



4.2.

Phase II

Actions on local ways.

- Agreements with 25 City Councils (generic for intervention in public roads).

4.3.

Phase III

Incorporation to the Project of large peri-urban areas under study..

- “La Cantueña”, 70 ha. (Getafe).
- “Ribera Arroyo Culebro”.

5.

Some data

ARCO VERDE WILL SUPPLY:

- **More than 200 km** of intervention
- **540.000** trees and shrubs.
- **55** Forest Areas connected:
 - Already existing: **30**
 - New areas: **25**
 - Programs to combat exotic species (allanthus, raccoon, parakeet ...).
- New Green Area:
 - 40 ha Green corridors
 - 306 ha biodiversity areas
- Improvements on **5.000 hectares** of green structures in the metropolitan area.
- Target population: **4,5 millones** inhabitants.

6.

Territorial Cohesión: greening our cities

The Arco Verde project constitutes:

- The pillar of the future Green Infrastructure Network of the Community of Madrid.
- A future Network of natural and semi-natural areas, with ecosystem services, to conserve regional biodiversity.
- A green infrastructure present in rural and urban environments, a link that improves its environmental values.
- Connection with the recently expanded Manzanares, Lozoya and Guadarrama River Basins Biosphere Reserve, with a total area of 105,654 ha (an increase of more than 125%).



Thank you very much

More information:

<https://www.comunidad.madrid/servicios/urbanismo-medio-ambiente/arco-verde>